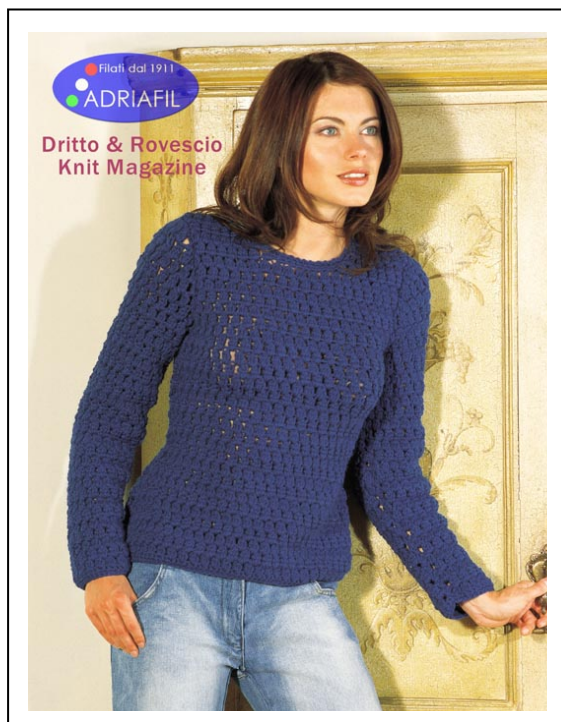


## The “ Derby ” Jumper



# Selman's Creative Craft

UK	M	L	XL
Italy	42	( 44 )	46

Adriafil Yarn - “ **New Zealand** ” plain or multi

Yarn required : 500 g (colour no. 94).

Crochet hook no. 3½ mm

Tapestry Needle

**Tension** – 6 nut motifs and 6 rows = 10cm square in nut motif stich using 3½ mm crochet hook

<b>Abbreviations :</b>	beg	- beginning
rem - remaining	dec	- decrease
st (s ) - stitch (es )	ch	- chain
cont - continue	rep	- repeat
tr - treble	dc	- double crochet

### Pattern Stitches :

Chain stitch

Double crochet

Nut motif: over uneven stitches.

**Row 1:** \* 1 nut motif (= in the same cable st. work 3 trs. tog.), 1 ch., skip 1 cable st. \*, rep. from \* to \*, 1 nut motif st.

**Row 2:** 1 tr., \* 1 ch., 1 nut motif in the space of the next chain, skip the next nut motif \*, rep. from \* to \*.

**from Row 3:** continue with row 2 Reverse stitch: work as double crochet from left to right.

### **Back:**

With crochet hook 3½ mm make 62 (60-64) st. chain. Starting from 2nd chain on hook, work 2 rows in dc. Cont. in nut motif stitch.

To shape the sides, dec. on each side 1 nut motif every 4 rows 3 times.

When work measures 35 (36-37) cm., to shape the armholes dec. on each side 2 nut motifs, then 1 nut motif after 2 rows.

When work measures 18 (19-20) cm. from beg. of armholes. Shape the neckline, leave centre 8 (9-10) nut motifs. Work sides separately; work 1 row normally, then leave for shoulder seam.

### **Front:**

Work in the same way as back until work measures 45 (47-49) cm.

To shape neckline leave 5 centre nut motifs, work sides separately; decrease centrewise 1 nut motif every 2 rows twice.

When work measures 9,5 cm. from beg. of neckline, leave the remaining sts. for shoulder seams.

### **Sleeve:**

With 3½ mm crochet hook make a 30 (32-34)st. chain. Starting from 2nd chain on hook, work 2 rows in dc. Cont. in nut motif stitch. On each side incr. 1 nut motif every 8 rows 3 times.

When work measures 42 (44-46) cm., shape the armholes; dec. on each side 1 nut motif every row 5 times. On next row dec 2 nut motifs at each end, then work one row over rem. nut motifs.

### **Finishing:**

Sew the shoulders. Join and fit the sleeves. Sew up the sides. With crochet hook no. 3.50 trim the neckline working 1 row in double crochet and 1 row in reverse st.

